

— ADMIT ONE —  
 KOLOB STAKE  
 SUNDAY SCHOOL  
**BOAT UNION MEETING**  
 JUNE 21, 1940  
 7:00 P. M. - - - - Price, 50c



**S. S. SHO-BOAT**

*Sunday school union meeting*



*Hobble Creek canyon July 1918*



*1925*



*Nov. 1925*



*Back of the Round Peak*



7<sup>th</sup> ward Relief Society visiting teachers  
4-23-91

Dear Elner

Your kind expression of sympathy  
is gratefully acknowledged

and deeply appreciated

The Frankie Averett Family.

Elner, you were a faithful friend to Frankie,  
you & I will miss her very much. Thank you  
for your love to both of us.  
a friend - Keith Averett

President of  
6<sup>th</sup> ward R.S.  
I was visiting  
teach and  
Spiritual Living  
Teacher



Genealogical Achievement Award  
Springville Stake - 1958

presented to

*Elner Hall*

of *Seventh* Ward

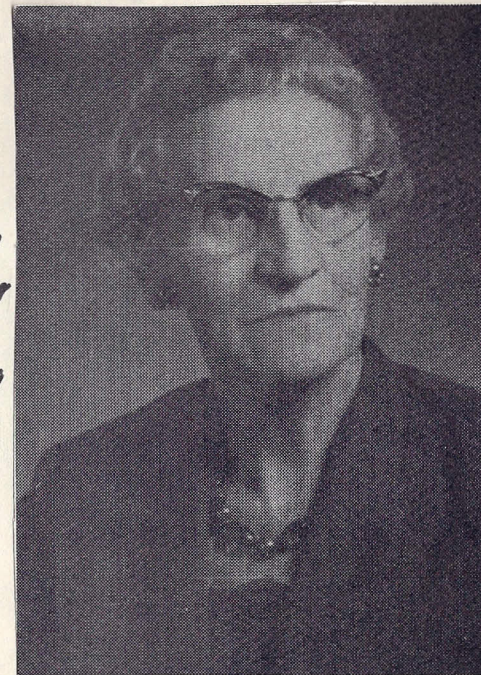
For over 12 Endowments and - or 32 hours research in the Salt Lake  
Genealogical Library.

Number of Endowments \_\_\_\_\_

Research Hours 111

Presented this 26 day of October, nineteen-  
hundred and fifty-eight.

By: *Carl S. Child* *Edmund*  
Ward Stake



MAE STRONG CHILD  
January 29, 1890 — October 14, 1980



NELLIE WEIGHT CONDIE  
December 28, 1890 — January 7, 1983

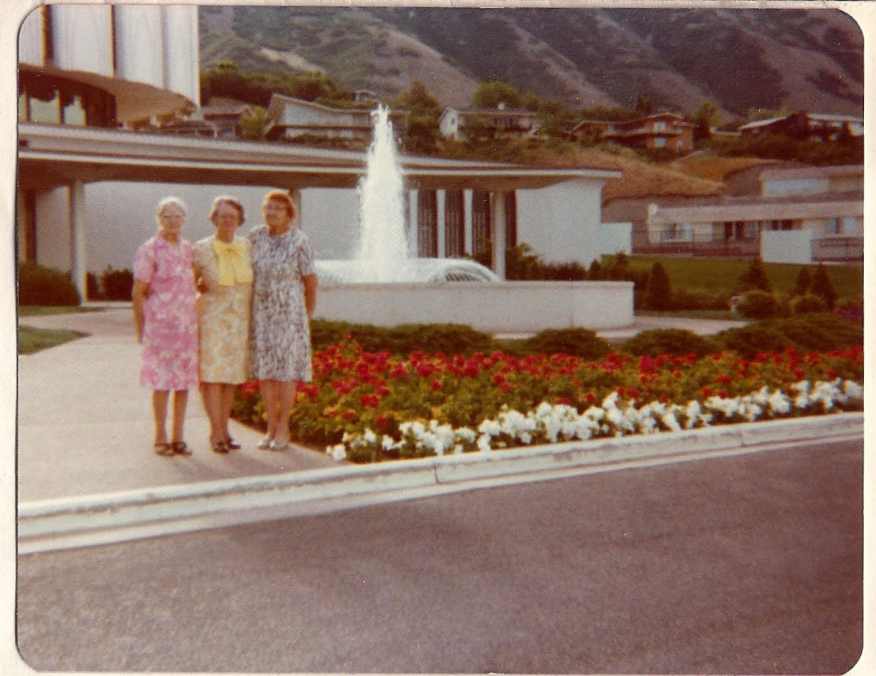
Counselor  
6<sup>th</sup> ward  
R.S.  
We taught  
in R.S.  
7<sup>th</sup> ward  
Went to  
Pravo  
Temple  
with her.



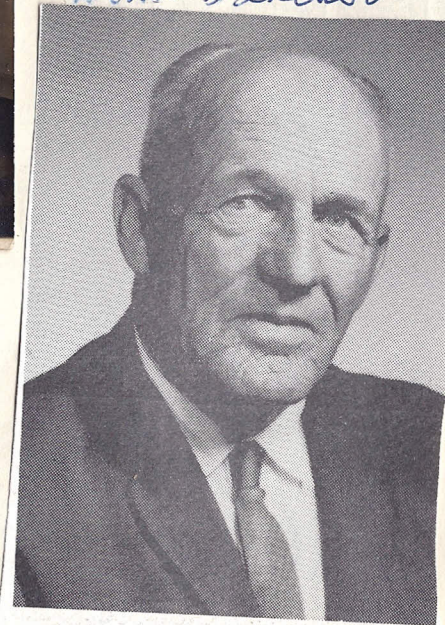
old meighbors. Williams



neighbors + friends  
Sutherland



In front of Provo Temple  
Elnor, Marguerite, Nellie Jul 1976  
Home Teachers



Home Teacher  
JAMES HEBER WARDLE  
December 23, 1902 — April 5, 1984



August 1927  
Elmer Dorothy Sheron



Jan. 1917



Jan 1917  
Elmer Nell Reed



July 1918



Oct. 1931

Elmer Jan. 1917 Nell Reed,  
In Bristol home in Ogden

Springville Sept. 1988



Elnor Hall

Springville July 1991



Elnor Hall holding Jarom Loane

Springville

July 1990



Allan, Dorothy D., Kyra, Hilton  
Hall  
Elmer



Hilton Elmer Allan + Luella Hall



Hilton Elmer Allan